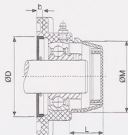
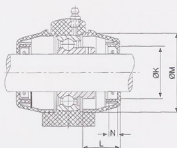
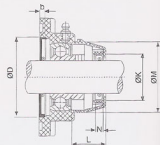


Plastic Covers: Open/Close Type (OC / CC)

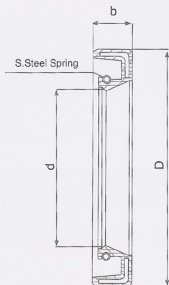
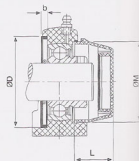
Shaft diameter		Dimensions(mm)					
mm	inch	K	N	L	M	D	b
12	$\frac{1}{2}$	32	7	23	50	52	6
15	$\frac{3}{8}$ $\frac{5}{8}$	32	7	23	50	52	6
17	$\frac{1}{4}$	32	7	23	50	52	6
20	$\frac{3}{4}$	32	7	23	50	52	6
25	$\frac{13}{16}$ $\frac{3}{8}$ $\frac{3}{16}$ 1	37	7	25	55	62	6
30	$1\frac{1}{8}$ $1\frac{1}{2}$ $1\frac{1}{16}$ $1\frac{1}{2}$	42	7	30	64	72	6
35	$1\frac{1}{2}$ $1\frac{5}{8}$ $1\frac{1}{2}$ $1\frac{1}{16}$	47	7	32	74.5	82	6
40	$1\frac{1}{2}$ $1\frac{3}{8}$	52	7	37	84	88	6
45	$1\frac{3}{8}$ $1\frac{1}{16}$ $1\frac{1}{2}$	57	7	41	89	93	6
50	$1\frac{7}{8}$ $1\frac{1}{2}$ $1\frac{1}{16}$ 2	62	7	47	94	98	6
55	$2\frac{1}{8}$ $2\frac{3}{8}$ 2	67	7	48	102	108	6
60	$2\frac{1}{4}$ $2\frac{1}{2}$ $2\frac{1}{16}$	72	7	48	116	116	6



• Flange Units



• Pillow Block Units



BACK SEALS

SIZE	FOR P T PA HOUSING			FOR F FL FB HOUSING		
	d	b	D	d	b	D
BS204	20	3	52	20	6	52
BS205	25	3	56	25	6	62
BS206	30	3	66	30	6	72
BS207	35	3	76	35	6	82
BS208	40	3	86	40	6	88
BS209	45	3	90	45	6	93
BS210	50	3	96	50	6	98
BS211	55	3	107	55	6	108
BS212	60	3	116	60	6	116